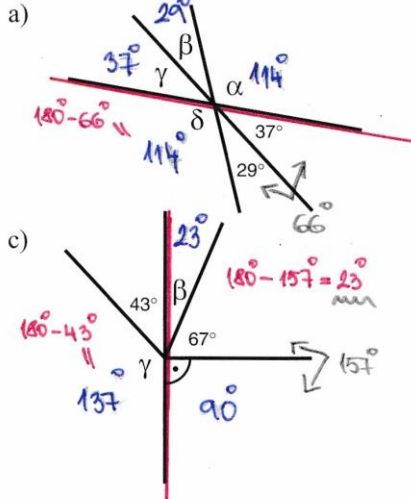
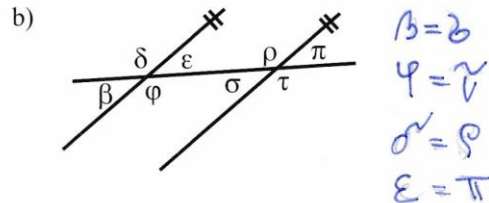
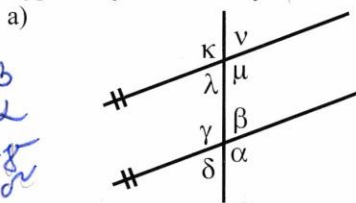


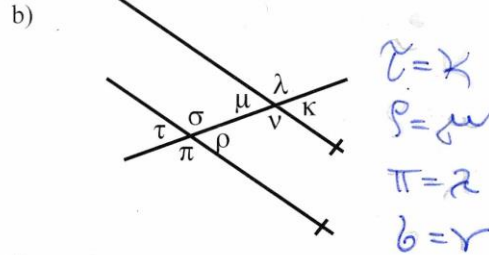
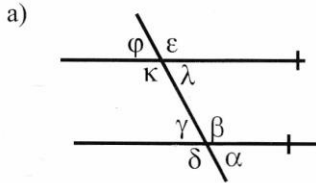
12. Vypočítej velikosti neznámých úhlů:



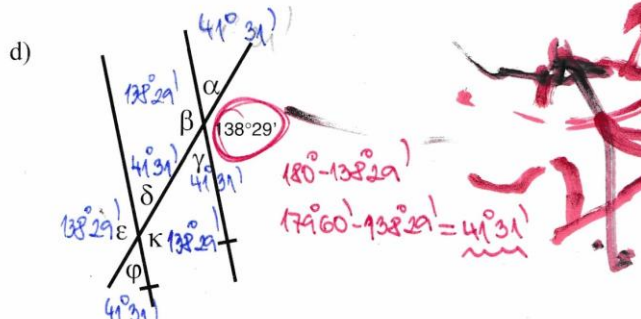
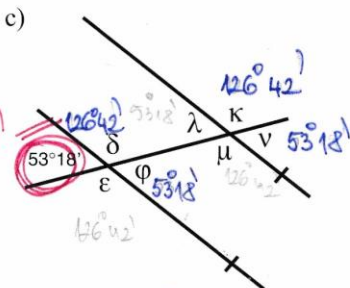
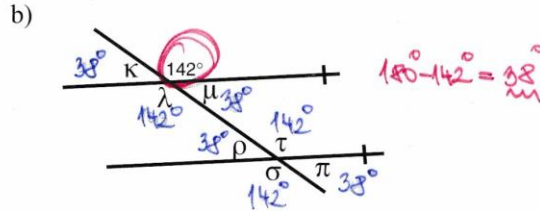
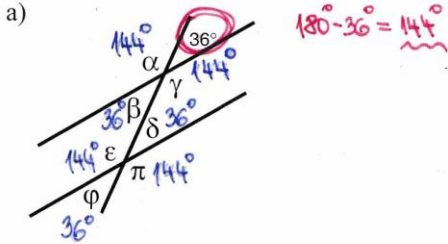
* 13. Vypiš dvojice souhlasných úhlů:



* 14. Vypiš dvojice střídavých úhlů:



* 15. Vypočítej velikosti označených úhlů a zapiš je:



$\varphi = \tau = \gamma = 53 \cdot 18'$
 $\sigma = \epsilon = \kappa = \mu = 126 \cdot 42'$

$\alpha, \beta, \sigma, \varphi = 41 \cdot 31'$
 $\rho, \epsilon, \kappa = 138 \cdot 29'$