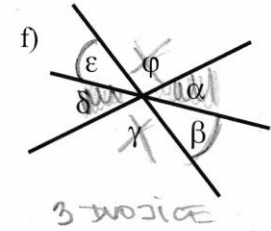
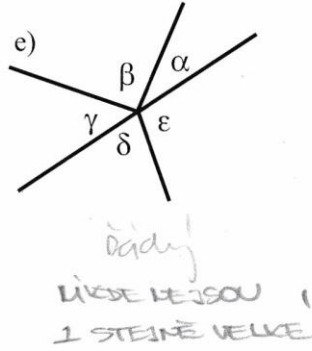
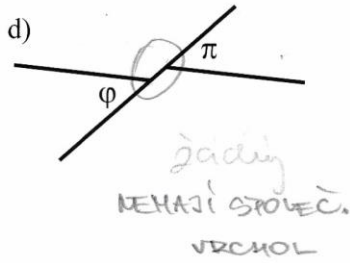
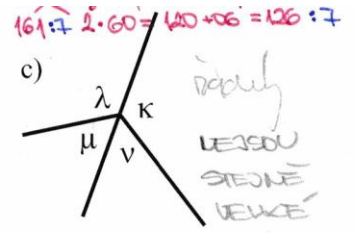
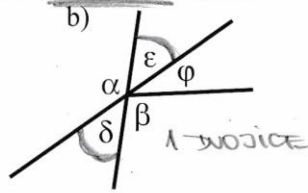
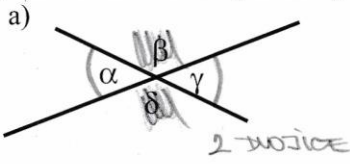
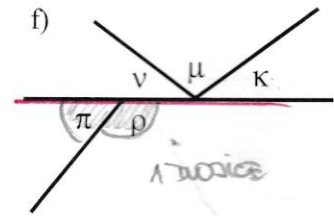
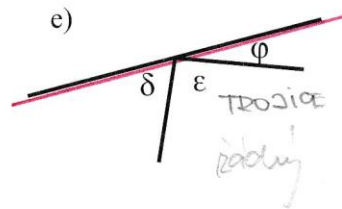
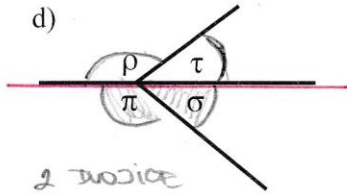
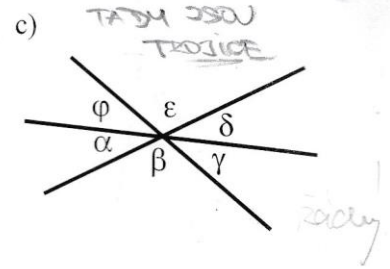
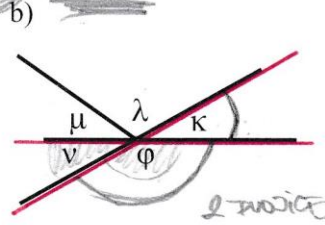
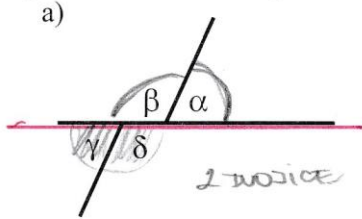


8. Vyznač obloučkem stejné barvy dvojici vrcholových úhlů:

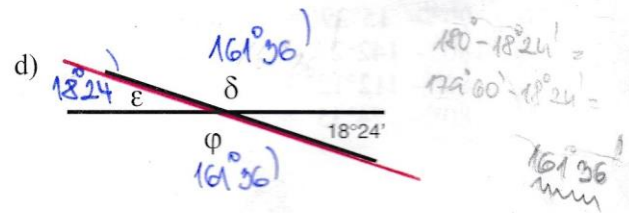
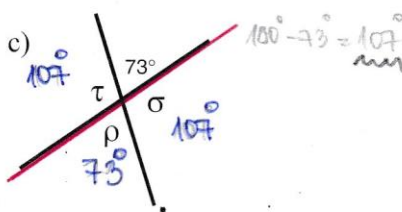
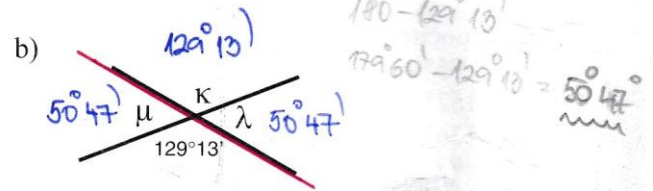
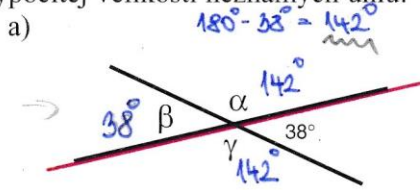


9. Vyznač obloučkem stejné barvy dvojice vedlejších úhlů:



10. Vypočítej velikosti neznámých úhlů:

$\alpha = \gamma$
 $\alpha + \beta = 180^\circ$



11. Vypočítej velikosti neznámých úhlů:

